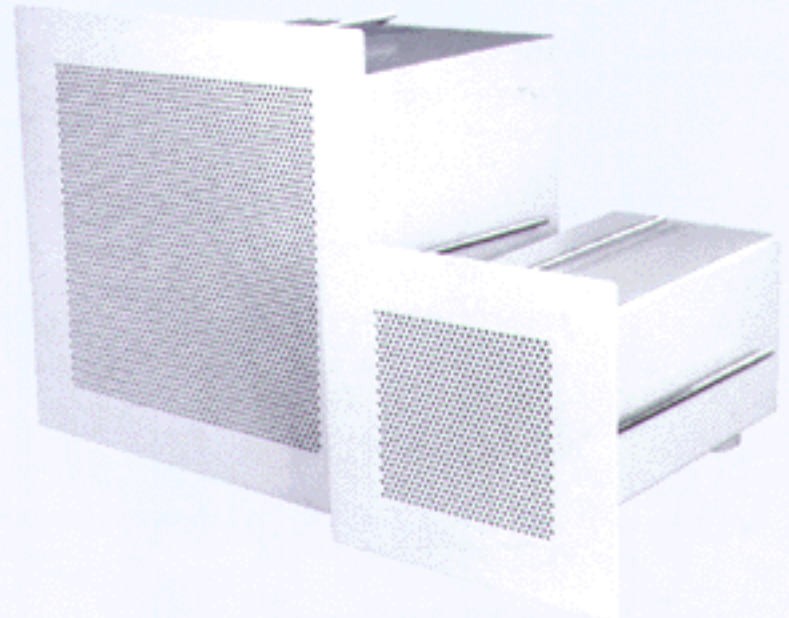


Description

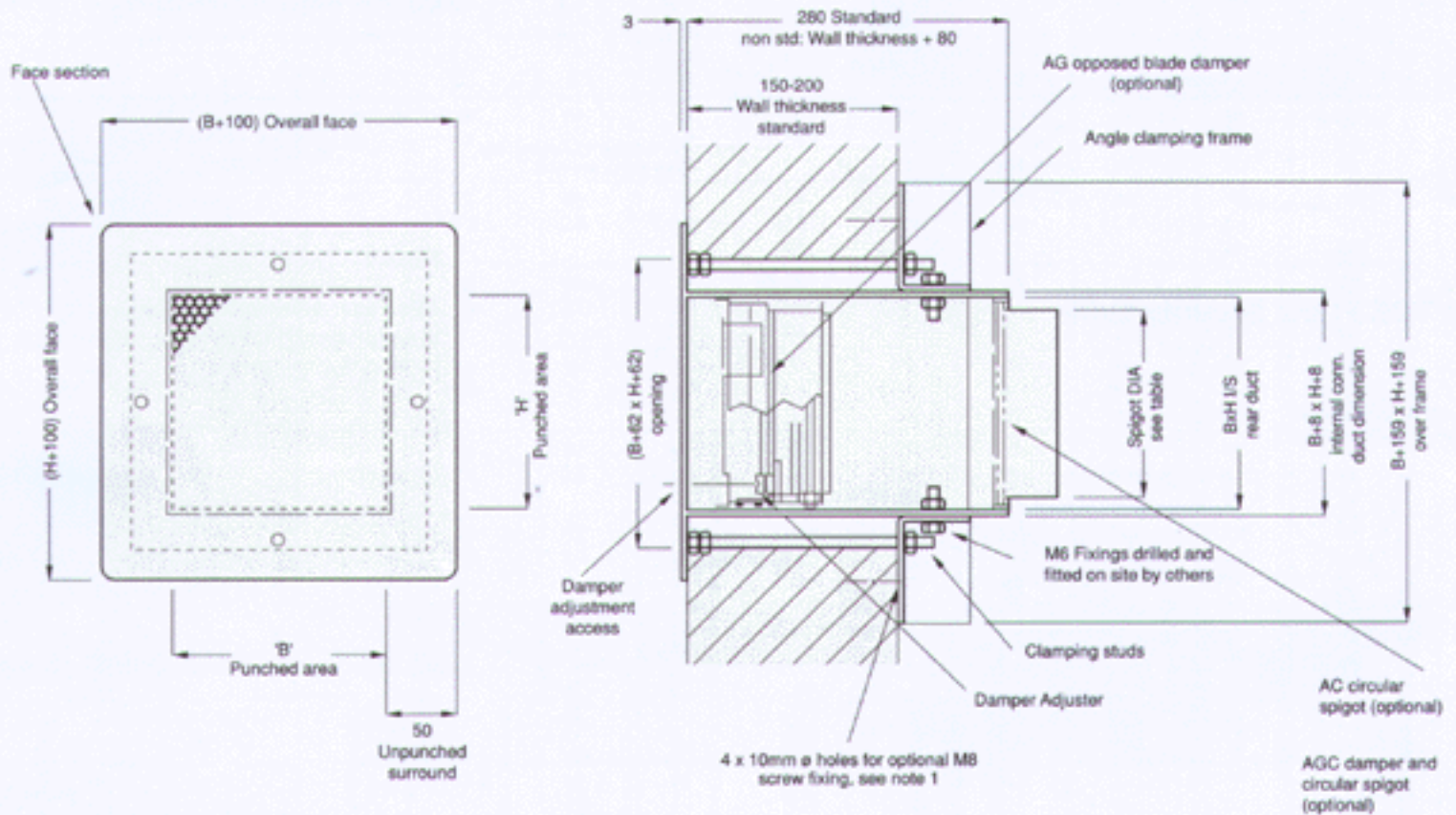
Trox range of cell grilles are constructed to meet the latest requirements of the Prison Service for both supply and extract air applications in areas requiring a heavy and robust construction.

Construction

Cell grilles have a 3mm thick perforated steel front plate and are available in three types of construction for high security, medium security, and low security areas. Available on request with opposed blade damper and for high/medium security construction a circular connecting spigot can be specified.



Type TCG1 High Security Grille



Note :

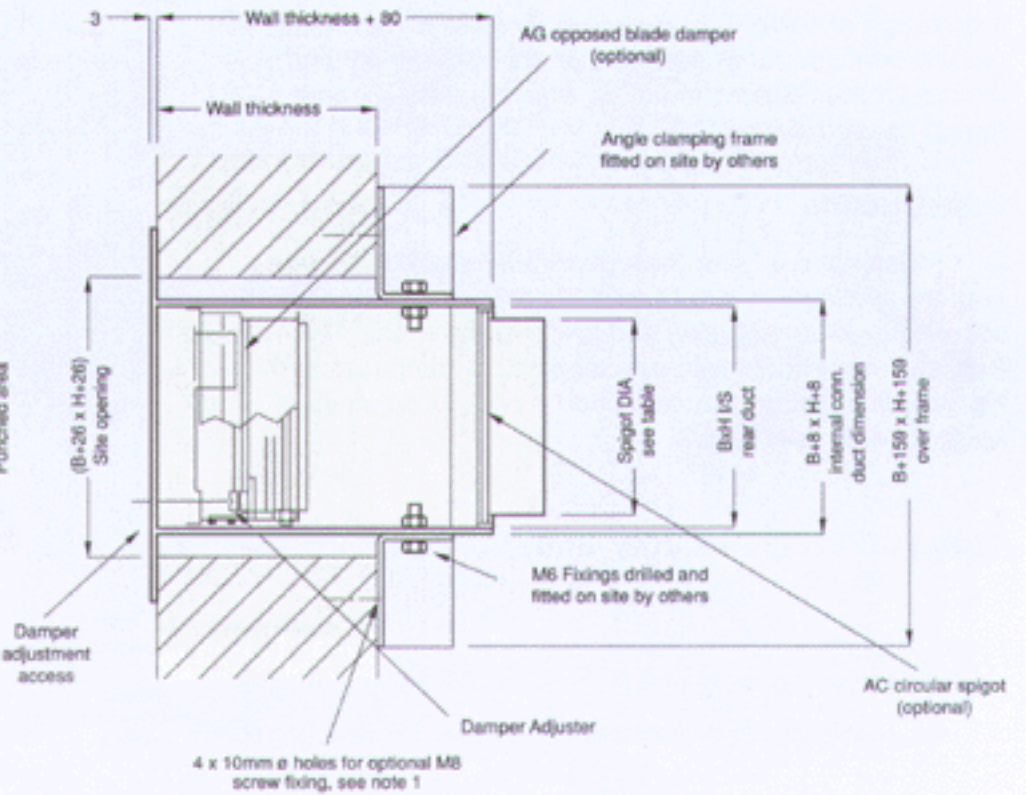
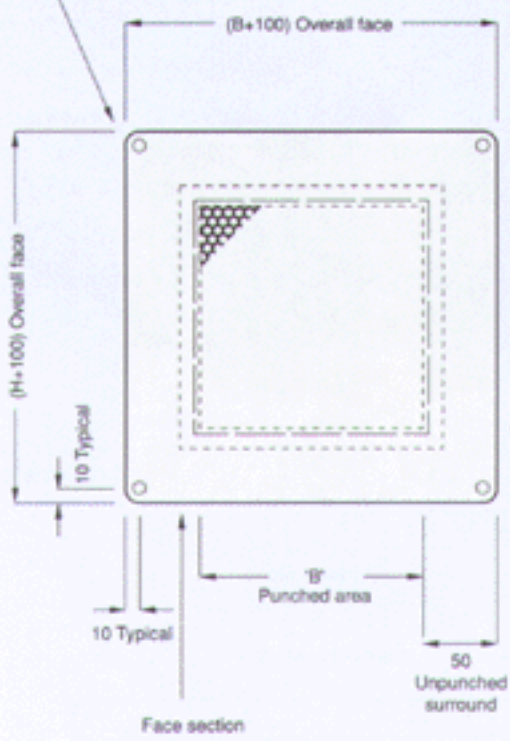
Material: Faceplate - perforated steel 3mm thick
When required: Spigot and end tray when specified - pre-galvanised steel sheet. NB - refer to table 2 for spigot sizes. Opposed blade damper - standard Trox AG type. Other accessories e.g. intumescent fire block available on request.
Standard finish: Powdercoat RAL 9010-20% gloss

Cell Grilles Product Information Type TCG-1 · TCG-2 · TCG-3

1/1.4/M/1

Type TCG2 Medium Security Grille

M6 Security screws
(not supplied) see note 1

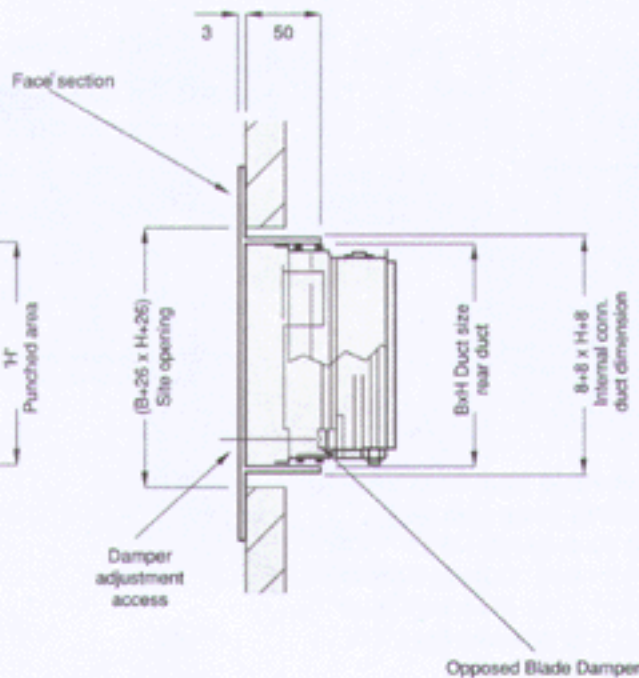
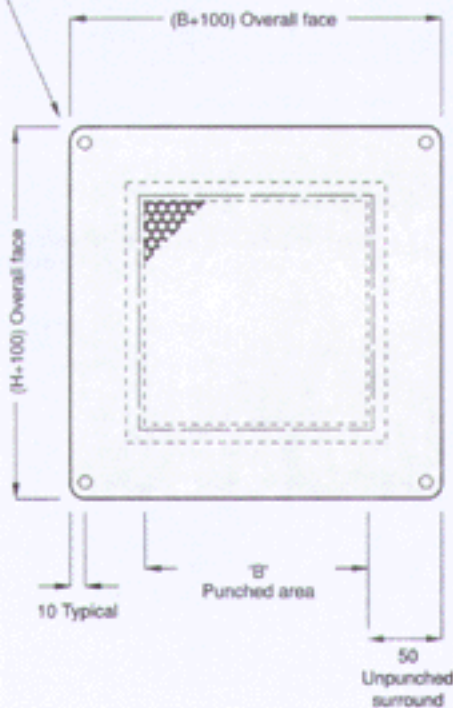


Note 1

Site fixing screws to be fitted with 'Kemfix' or similar by others (chemical locking compound)

Type TCG3 Low Security Grille

M6 Security screws
(not supplied) See note 1



Cell Grilles Product Information Type TCG-1 · TCG-2 · TCG-3

1/1.4/M/1

Table 1: Standard Sizes in mm

B	H	Spigot ø
150	150	123
200	150	123
250	150	123
200	200	158
250	200	158
250	250	198

Note :

Other sizes available on request

Nomenclature:

\dot{V} in l/s: Volume Flow L in M: Throw distance to 0.5m/s \dot{V}_K in m/s: Face Velocity L_{WA} in dB(A): A-weighted sound power level
 ΔPS in Pa: Static Pressure Drop L_{WNC} : Approx. $L_{WA}-5$

Table 2: Cell Grille Supply Air Data

Size mm	\dot{V}_K m/s ΔPS (Pa)	0.5	0.75	1	1.25	1.5	1.75	2	2.25	2.5	2.75	3
		1	2	3	5	8	10	13	17	21	25	30
150 x 150	\dot{V} (l/s)	11	17	23	28	34	39	45	51	56	62	68
	L (m)	1.1	1.7	2.2	2.8	3.3	3.9	4.5	5	5.6	6.1	6.7
	L_{WA} (dBA)	-	-	-	22	27	31	34	37	40	42	45
200 x 150	\dot{V} (l/s)	15	23	30	38	45	53	60	68	75	83	90
	L (m)	1.3	1.9	2.6	3.2	3.9	4.5	5.1	5.8	6.4	7.1	7.7
	L_{WA} (dBA)	-	-	-	23	28	32	35	38	41	43	46
250 x 150	\dot{V} (l/s)	19	28	38	47	56	66	75	84	94	103	113
	L (m)	1.4	2.2	2.9	3.6	4.3	5	5.8	6.5	7.2	7.9	8.6
	L_{WA} (dBA)	-	-	-	24	29	33	36	39	42	44	47
200 x 200	\dot{V} (l/s)	20	30	40	50	60	70	80	90	100	110	120
	L (m)	1.5	2.2	3	3.7	4.5	5.2	5.9	6.7	7.4	8.2	8.9
	L_{WA} (dBA)	-	-	-	25	30	34	37	40	43	45	48
250 x 200	\dot{V} (l/s)	25	38	50	63	75	88	100	113	125	138	150
	L (m)	1.7	2.5	3.3	4.2	5	5.8	6.6	7.5	8.3	9.1	10
	L_{WA} (dBA)	-	-	-	26	31	35	38	41	44	46	49
250 x 250	\dot{V} (l/s)	31	47	63	78	94	109	125	141	156	172	188
	L (m)	1.9	2.8	3.7	4.6	5.6	6.5	7.4	8.4	9.3	10.2	11.1
	L_{WA} (dBA)	-	-	-	27	32	36	39	42	45	47	50

Table 3: Cell Grille Extract Air Data

Size mm	\dot{V}_K m/s ΔPS (Pa)	0.5	0.75	1	1.25	1.5	1.75	2	2.25	2.5	2.75	3
		1	3	5	8	11	15	20	25	31	38	45
150 x 150	\dot{V} (l/s)	11	17	23	28	34	39	45	51	56	62	68
	L_{WA} (dBA)	-	-	-	-	20	24	27	30	33	35	38
200 x 150	\dot{V} (l/s)	15	23	30	38	45	53	60	68	75	83	90
	L_{WA} (dBA)	-	-	-	-	21	25	28	31	34	36	39
250 x 150	\dot{V} (l/s)	19	28	38	47	56	66	75	84	94	103	113
	L_{WA} (dBA)	-	-	-	-	22	26	29	32	35	37	40
200 x 200	\dot{V} (l/s)	20	30	40	50	60	70	80	90	100	110	120
	L_{WA} (dBA)	-	-	-	-	23	27	30	33	36	38	41
250 x 200	\dot{V} (l/s)	25	38	50	63	75	88	100	113	125	138	150
	L_{WA} (dBA)	-	-	-	20	24	28	31	34	37	39	42
250 x 250	\dot{V} (l/s)	31	47	63	78	94	109	125	141	156	172	188
	L_{WA} (dBA)	-	-	-	20	25	29	32	35	38	40	43

